

KloudEdge Technologies

Digital Transformation Partner

**SOCIAL MEDIA
DIGITAL MARKETING SERVICES**



www.KloudEdge.com

Inquiry at: Sales@KloudEdge.com

We provide 360° Client Enablement Services

At KloudEdge, we provide a diverse range of custom development and technical solutions to cater the specific needs of businesses. Our team comprises highly skilled experts who are renowned for their proficiency in delivering top-quality services within their respective fields.



DIGITAL MARKETING

- Marketing Strategy Consultation
- Social Media Management
- Search Engine Optimization (SEO)
- Pay-Per-Click (PPC) Advertising
- Content Marketing & Blogging
- Email Marketing & Automation
- Conversion Rate Optimization (CRO)
- Analytics & Performance Tracking



UI \ UX SERVICES

- Design Consultation
- Design Workshop
- Wireframes
- Prototyping
- UI/UX Assessment
- Validation & Delivery UX Audit
- Data visualization
- Cross-platform experiences design



SaaS \ WEB DEVELOPMENT

- Application Assessment
- Integration Services
- Cloud Native Applications Development
- Application Modernization
- Bespoke application development
- Mobile App Development



QUALITY ASSURANCE

- Automated Testing
- Manual Testing
- Performance Testing
- Installation Testing
- Usability Testing
- Compatibility Testing
- Cross-browser Testing
- Web Application Testing
- Agile Test Automation
- Software Testing
- Security Testing



CLOUD & DEVOPS

- CI/CD Pipelines
- Configuration Management
- Microservices Deployment
- Infrastructure as Code
- Cloud Assessment
- Cloud Security
- Cost Optimization
- Cloud Migration
- Multi-Cloud Solution
- Designing & Deployment



DATA SCIENCE

- Data Management
- Data Integrations (ETL)
- Data Tuning & Optimizations
- Business Intelligence
- Data Insights
- Data Visualizations
- Big Data
- Real-Time analytics
- Data Warehousing
- ML/AI

Why Social Media Marketing Matters for Business?

**Increased
Reach &
Visibility**

**Targeted Ads
& Lead
Generation**

**Visual
Storytelling**

**Build
Credibility
and Trust**

**Real-Time
Engagement**

**Cost-Effective
Marketing**

Challenges

Low Lead Generation and Engagement

Limited Visibility and Brand Awareness

Inconsistent Branding and Messaging

Difficulty in Showcasing Properties Effectively

Lack of Client Engagement and Follow-Up

Targeted Advertising

Powerful Stage to Showcase Product and Services

Centralized Platform for Consistent Messaging

Multimedia Content

Ongoing Communication and Relationship-Building

Resolutions

KNOWING YOUR PAIN POINTS IS THE KEY

Services Offered

Social Media Strategy Development

Content Creation and Curation

Paid Social Advertising

Community Management and Engagement

Social Media Analytics and Reporting

Reputation Management

Landing Pages

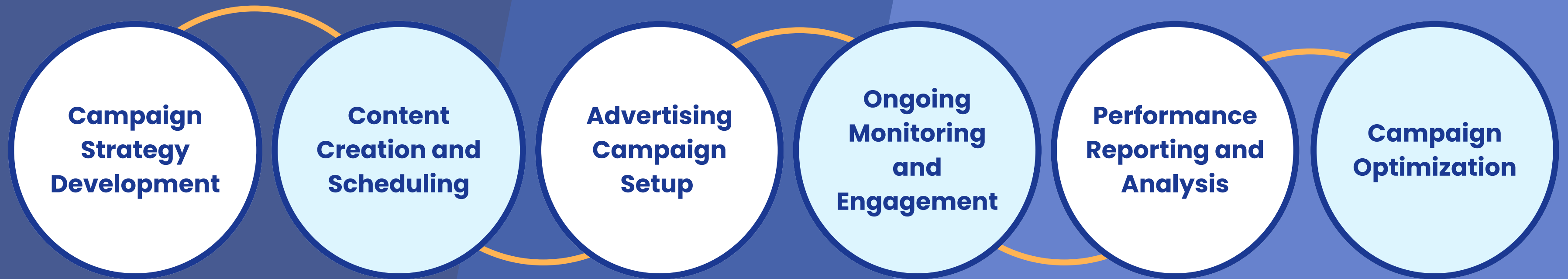
Email Marketing

Lead Generation

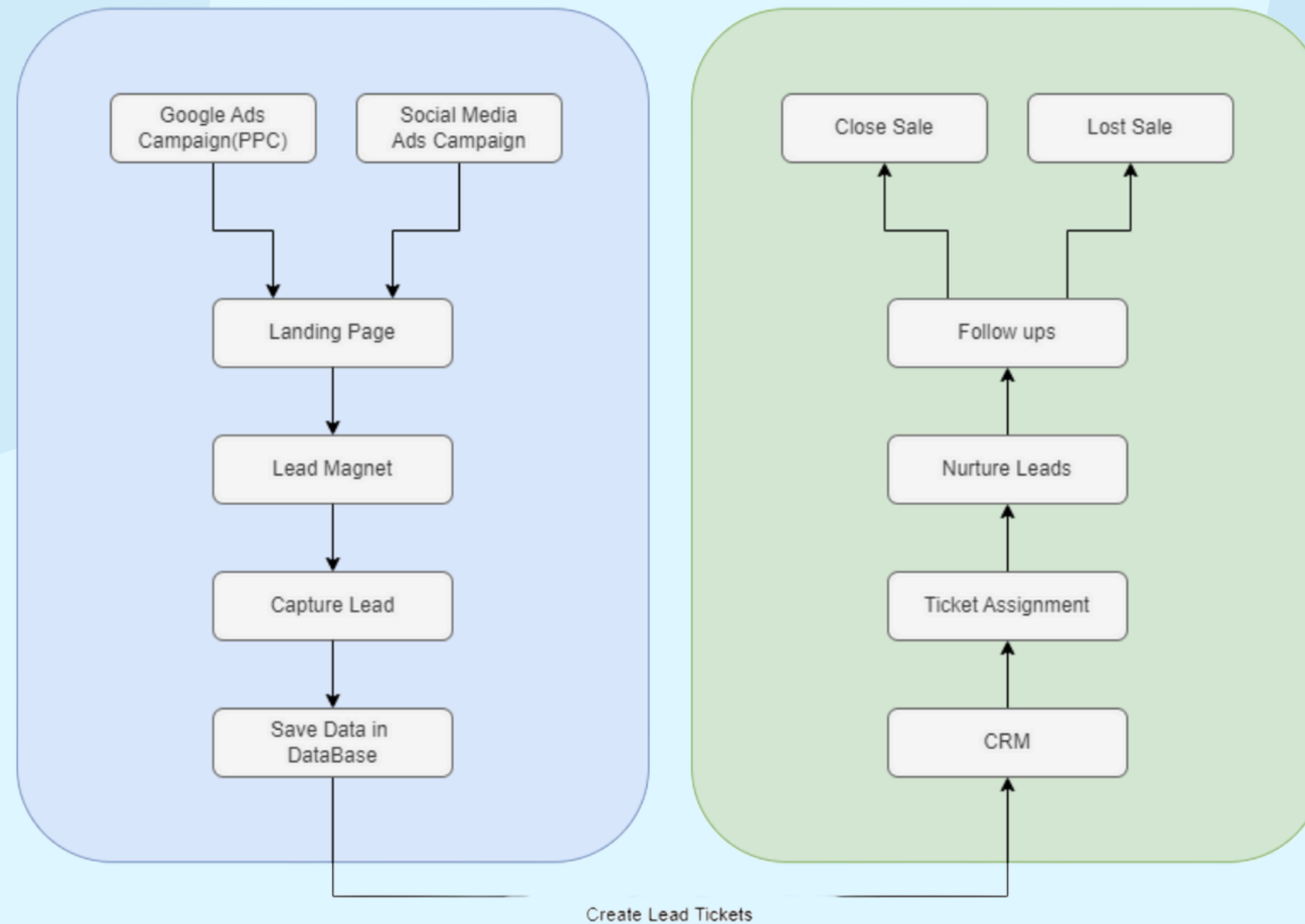
Platforms we manage:

- ☐ Instagram
- ☐ Facebook
- ☐ TikTok
- ☐ YouTube
- ☐ Google Ad Manager

How It Works?



Lead to Sale Strategy



ITS ALL ABOUT STRATEGY & PLANING

Packages

Basic	Standard	Premium
Audience research Yes	Audience research Yes	Audience research Yes
Target Social Media Only One Platform	Target Social Media Two Platform	Target Social Media Three Platform
Content Creation Videos: 2 (Max Len 1 minute) static Images: 10	Content Creation Videos: 4 (Max Len 1.5 minute) static Images: 15	Content Creation Videos: 6+ (Max Len 1.5 minute) static Images: 20+
Campaign setup One Campaign	Campaign setup Two Campaign	Campaign setup 4+ Campaign
Analytics and Reporting Yes	Analytics and Reporting Yes	Analytics and Reporting Yes
Campaign optimization Yes	Campaign optimization Yes	Campaign optimization Yes

Note: Monthly Plan

For Pricing: Sales@KloudEdge.com

Portfolio



Benefits of partnering with us!

1. Faster time to market.
2. Scalability and flexibility.
3. Cost-effectiveness.
4. Access to specialized expertise

For Profiles and Pricing
Sales@KloudEdge.com



Useful Link

<https://youtu.be/gvaTBr40ZWE>

<https://youtu.be/-y4ZtK6mx3g>

<https://youtu.be/TzFzIXKKOH0>

https://youtu.be/ycOEhbOm-YM?si=MQZiZt_-PJwaZ_Rc

<https://youtu.be/qyCW7AOuSy0>

<https://youtu.be/C4W5qB55Emk>

The Goal Is HAPPY CUSTOMERS

@Abubakar // Phermo V1 <https://drive.google.com/file/d/1afr>

SebCryptoTrades Today at 2:39 AM

Bro you killed it absolutely fire editing big props to you

1

Cam Meunier 7:14 AM

@Phermo you CRUSHED that video of me. WOW great work bro, GAS. Going live tmr

4

Brad Goh

Jul 10, 2023, 5:31 PM

Here you go:
f1o/teUGzFym

Jul 10, 2023, 6:31 PM

very impressed with the animations

presley 8:19 PM

This video looks sick @Phermo

1

Franco Crean

Broooo 4:52 am

It was all worth it 4:52 am

This video is ducking incredible 🌶️🌶️ 4:52 am

d4vd

@d4vddd

WITHERED

Joined December 2021 · 30.3K Followers

bro i fw your work heavyy

i gotta tap in witchu more fr

Jan 29, 2022, 12:25 AM

Appreciate that man

Jan 29, 2022, 6:05 AM · Sent

Nate 01/17/2024 8:57 PM

Audience Retention 4:32 (51.61%)

Average view duration · Lifetime

Key moments for audience retention

Intro Top moment Split Dip

67% of viewers are still watching at around the 0:30 mark, which is typical

Now work! This part of the video kept your viewers watching for longer than usual.

solid for video 1, always a good thing to see 50%+ and the scripts are only getting better!

Justus Dutra

f1o/HmPlaJEf

Here you go

Jan 26, 2024, 1:51 AM

So good bro

Jan 26, 2024, 1:54 AM

Keir 4:05 AM

Left few revisions

Editing was fireee

INDUSTRIES

- Retail

Construction

Healthcare

Real Estate
- E-Commerce

Insurance

Hospitality

WAY FORWARD...

www.KloudEdge.com



GLOBAL FOOTPRINT

AUSTRALIA

30 fairhaven Avenue
Harisdale,6112 Perth
Western Australia.
Phone: +61 420205344
Email: inquiry@klouledge.com

PAKISTAN

322-A, Babar Block,
Bahria Town, Lahore
Punjab, Pakistan.
Phone: +92 300 4521342
Email: inquiry@klouledge.com

Inquiry at: Sales@KloudEdge.com