



# Digital Transformation Partner

**SOFTWARE AS A SERVICE**  
DEVELOPMENT SERVICES



[www.KloudEdge.com](http://www.KloudEdge.com)

Inquiry at: [Sales@KloudEdge.com](mailto:Sales@KloudEdge.com)

# We provide 360° Client Enablement Services

At KloudEdge, we provide a diverse range of custom development and technical solutions to cater the specific needs of businesses. Our team comprises highly skilled experts who are renowned for their proficiency in delivering top-quality services within their respective fields.



## BUSINESS ANALYSIS

- Project Discovery
- Requirements Management
- Software Requirement Assessment
- Project/Product Scoping & Prioritization
- Prototyping/Wireframing
- MVP Scoping
- Solution Evaluation
- Product Health Check
- R&D for ideation
- Proof of Concept



## UI \ UX SERVICES

- Design Consultation
- Design Workshop
- Wireframes
- Prototyping
- UI/UX Assessment
- Validation & Delivery UX Audit
- Data visualization
- Cross-platform experiences design



## SaaS \ WEB DEVELOPMENT

- Application Assessment
- Integration Services
- Cloud Native Applications Development
- Application Modernization
- Bespoke application development
- Mobile App Development



## QUALITY ASSURANCE

- Automated Testing
- Manual Testing
- Performance Testing
- Installation Testing
- Usability Testing
- Compatibility Testing
- Cross-browser Testing
- Web Application Testing
- Agile Test Automation
- Software Testing
- Security Testing



## CLOUD & DEVOPS

- CI/CD Pipelines
- Configuration Management
- Microservices Deployment
- Infrastructure as Code
- Cloud Assessment
- Cloud Security
- Cost Optimization
- Cloud Migration
- Multi-Cloud Solution
- Designing & Deployment



## DATA SCIENCE

- Data Management
- Data Integrations (ETL)
- Data Tuning & Optimizations
- Business Intelligence
- Data Insights
- Data Visualizations
- Big Data
- Real-Time analytics
- Data Warehousing
- ML/AI



# **Demand Drivers For SaaS Applications**

**Scalability  
&  
Flexibility**

**Cost  
Effectiveness**

**Accessibility  
&  
Collaboration**

**Rapid  
Deployment &  
Updates**

**API  
Integration**

**Pricing  
&  
Subscription**

# Challenges

**Complex Requirements  
Gathering**

**Scalability Challenges**

**Data Security and Compliances**

**Integration Complexity**

**User Experience**

**Cost Management**

**Vendor Lock-In**

**Requirement elicitation  
techniques**

**Architectural Best Practices**

**Implementing encryption,  
Access Controls**

**Adopting the integration  
standards**

**User-Centric Design  
Methodologies**

**Cost Optimization Strategies**

**Adopting interoperable  
standards and APIs**

# Resolutions



# Core Services

## Features:

1. Tailored Solutions.
2. Scalability.
3. Automation.
4. User Experience.
5. Security.
6. 24x7 Support.
7. Certified Teams

## Benefits:

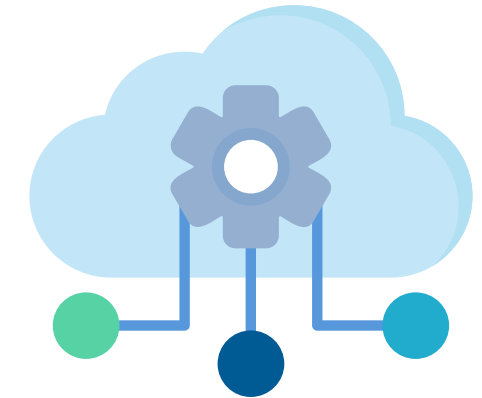
1. Faster time to market.
2. Scalability and flexibility.
3. Cost-effectiveness.
4. Access to specialized expertise



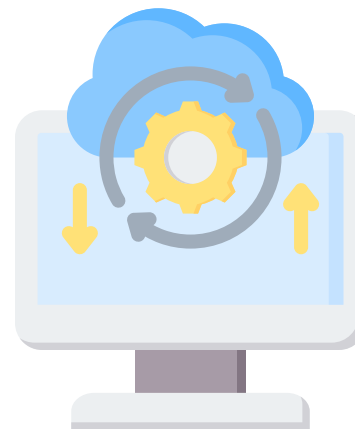
**Custom SaaS Application Development**



**SaaS Product Strategy and Consulting**



**SaaS Integration Services**



**SaaS Migration and Modernization**



**Ongoing Support and Maintenance**

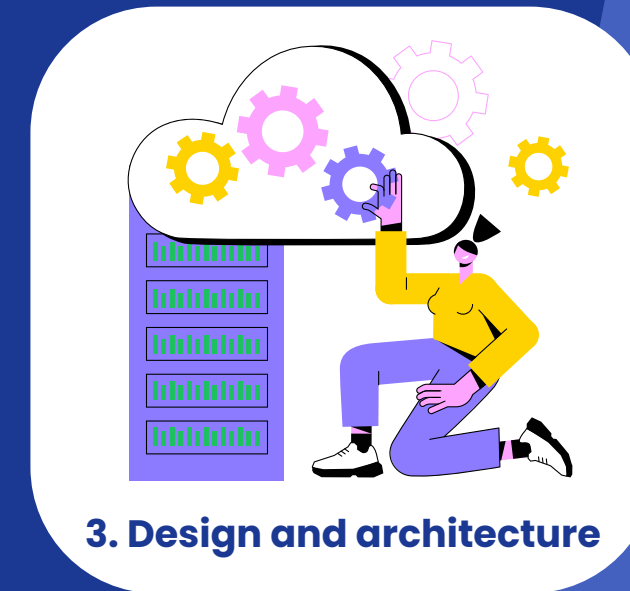


**Staff Augmentation**

# SaaS Development Process

## Agile Delivery Model

1. Planning
2. Development
3. Testing
4. Automation
5. Delivery
6. Maintain
7. Repeat



# SAAS TECHNOLOGY LANDSCAPE



## Backend Development

### Programming Languages

C# (.NET Core) ,Node.js, Python

### Framework

ASP.NET Core

### Database

Azure SQL Database, Azure Cosmos DB

### Authentication/Authorization

Azure Active Directory (Azure AD)

### Microservices Architecture

Azure Kubernetes Service (AKS), Azure Service Fabric

## Frontend Development

### Web Framework

Angular, React, or Vue.js

### UI/UX Design

Azure App Service, Azure Static Web Apps

### State Management

Redux (for React) or Vuex (for Vue.js)

### Responsive Design

Bootstrap or Tailwind CSS

## DevOps and CI/CD

### Version Control

Azure DevOps ,GitHub

### CI/CD

Azure Pipelines

### Monitoring and Logging

Azure Monitor, Application Insights

## Additional Azure Services

### Messaging and Event Streaming

Azure Service Bus, Azure Event Hubs

### Serverless Computing

Azure Functions

### Storage

Azure Blob Storage, Azure Table Storage

### Network Services

Azure Virtual Network, Azure DNS, Azure Content Delivery Network (CDN)

### Security Services

Azure Security Center, Azure DDoS Protection, Azure Key Vault



# SAAS TECHNOLOGY LANDSCAPE



## Backend Development

### Programming Languages

Node.js, Python

### Framework

Flask or Django (for Python), Express.js (for Node.js)

### Database

Amazon RDS, Amazon DynamoDB

### Authentication/Authorization

AWS Cognito

### Microservices Architecture

AWS Lambda, Amazon ECS or Amazon EKS

## Frontend Development

### Web Framework

Angular, React, or Vue.js

### UI/UX Design

Amazon S3, AWS Amplify

### State Management

Redux (for React) or Vuex (for Vue.js)

### Responsive Design

Bootstrap or Material-UI

## DevOps and CI/CD

### Version Control

AWS CodeCommit ,GitHub

### CI/CD

AWS CodePipeline

### Monitoring and Logging

Amazon CloudWatch, AWS X-Ray

## Additional Azure Services

### Messaging and Event Streaming

Amazon SQS, Amazon SNS, Amazon Kinesis

### Serverless Computing

AWS Lambda

### Storage

Amazon S3, Amazon EBS

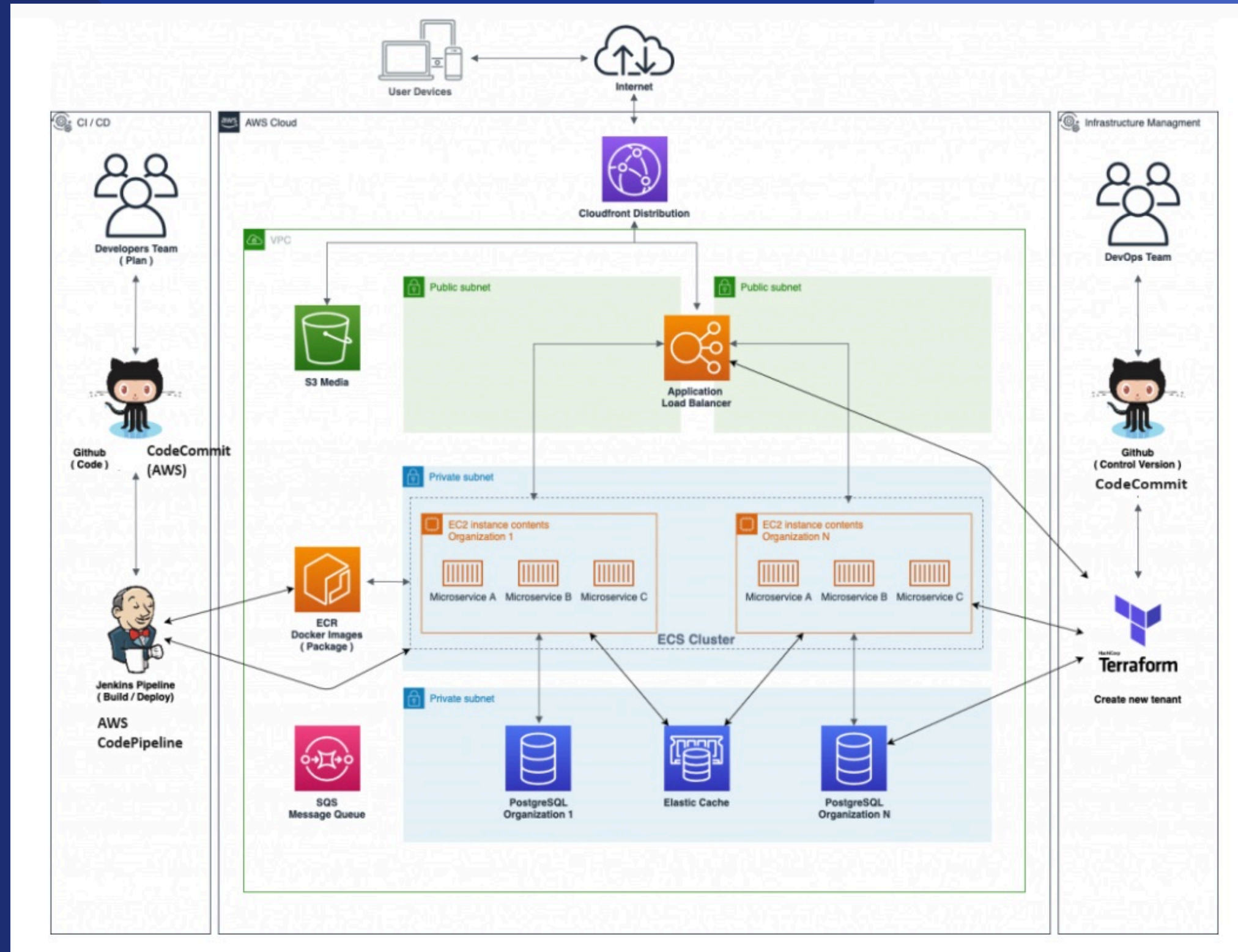
### Network Services

Amazon VPC, Amazon CloudFront, Load Balancers

### Security Services

IAM, AWS WAF, Amazon GuardDuty, AWS KMS, AWS Shield etc.

# TYPICAL ARCHITECTURE

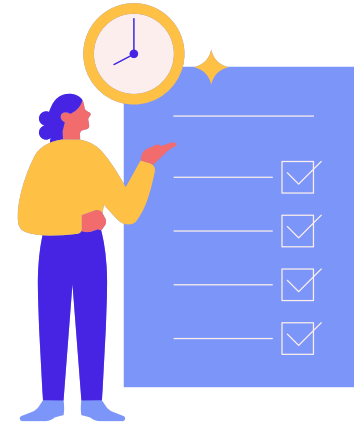


**BASED ON BEST PRACTICES AND PLATFORM GUIDELINES**

# SAAS DEVELOPMENT TEAMS



**Business Analysis  
Team**



**Project Management  
Team**



**SaaS Development  
Team**



**Cloud and DevOps  
Team**



**Quality Assurance  
Team**



**Data Science  
Team**



**Ongoing Support  
Team**

## **Benefits of partnering with us!**

1. Faster time to market.
2. Scalability and flexibility.
3. Cost-effectiveness.
4. Access to specialized expertise

**For Profiles and Pricing**  
[Sales@KloudEdge.com](mailto:Sales@KloudEdge.com)



# STAFF AUGMENTATION



Managed Teams



Individual Technologist



# STAFF AUGMENTATION PROCESS



Requirement



Shortlisting



Client Interview

**Accurate Skill Profiling**  
Comprehensive understanding of candidate capabilities. Realistic evaluation of potential contributions to the project

**Efficient Talent Selection**  
Identify the best-fit candidates efficiently. Minimize onboarding time and ensure project readiness

**Task-driven Assessment by client**



Onboarding



Engagement



Reporting



Retention

**A WIN-WIN PROCESS**

# INDUSTRIES

- Retail
- Construction
- Healthcare
- Food & Beverages
- E-Commerce
- Insurance
- Hospitality



# WAY FORWARD...

www.KloudEdge.com



## GLOBAL FOOTPRINT

### AUSTRALIA

30 fairhaven Avenue  
Harisdale,6112 Perth  
Western Australia.  
Phone: +61 420205344  
Email: inquiry@klouledge.com

### PAKISTAN

322-A, Babar Block,  
Bahria Town, Lahore  
Punjab, Pakistan.  
Phone: +92 300 4521342  
Email: inquiry@klouledge.com

Inquiry at: Sales@KloudEdge.com